

Match These Animals!



Fish



Mammal



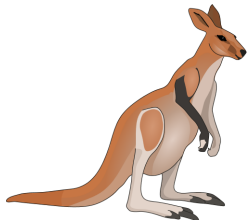
Reptile



Amphibian

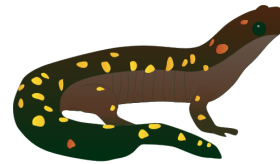


Bird

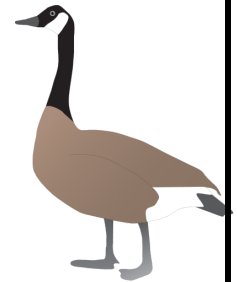


Images throughout this booklet courtesy of Integration and Application Network, University of Maryland Center for Environmental Science (ian.umces.edu/imagelibrary/).

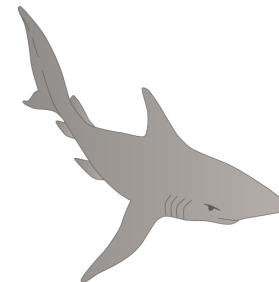
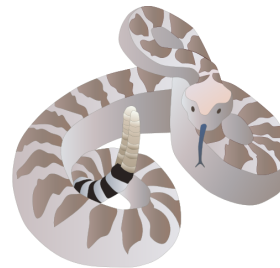
My Animal Classification



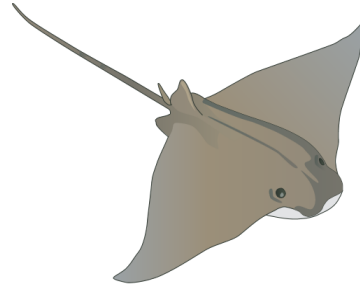
Book



Name



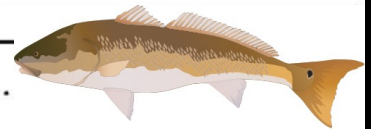
© Amy Hood, Kids in the Studio: <http://abh21.wordpress.com/>



FISH

Characteristics of Fish:

Handwriting practice area with ten sets of lines. Each set consists of a solid top line, a dashed middle line, and a solid bottom line. A yellow fish illustration is positioned at the end of the bottom-most line.





BIRDS

Characteristics of Birds:

Handwriting practice area for birds, consisting of 10 sets of horizontal lines. Each set includes a solid top line, a dashed middle line, and a solid bottom line. An illustration of a woodpecker is positioned at the bottom right of the page, facing left.



REPTILES

Characteristics of Reptiles:

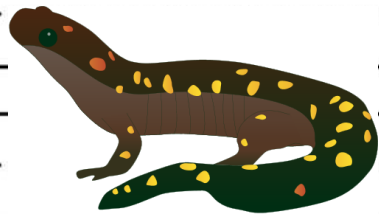
Handwriting practice area for reptiles, consisting of 10 sets of horizontal lines. Each set includes a solid top line, a dashed middle line, and a solid bottom line. An illustration of an alligator is positioned at the bottom right of the page, facing left.



AMPHIBIANS

Characteristics of Amphibians:

Handwriting practice area for the Amphibians section, consisting of ten sets of horizontal lines. Each set includes a solid top line, a dashed middle line, and a solid bottom line. An illustration of a brown salamander with yellow spots is positioned at the bottom right of this section.



MAMMALS

Characteristics of Mammals:

Handwriting practice area for the Mammals section, consisting of ten sets of horizontal lines. Each set includes a solid top line, a dashed middle line, and a solid bottom line. An illustration of a blue whale is positioned at the bottom right of this section.

